

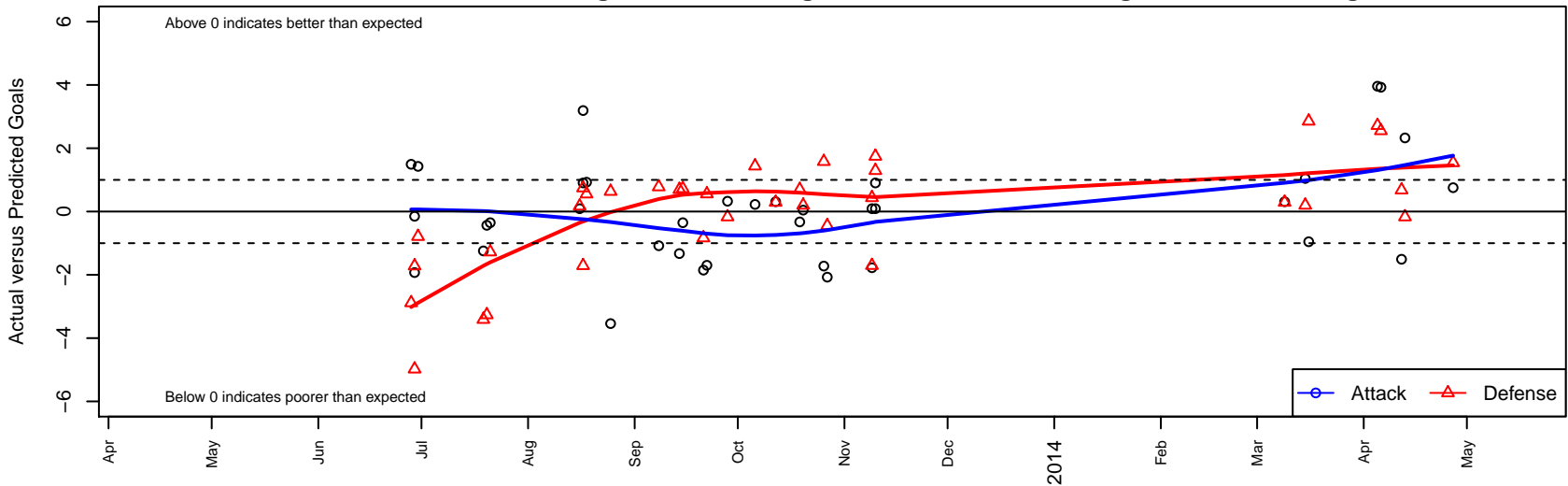
HSC Milan B01

Hillsboro SC
 Hillsboro, OR
 B01 total strength=584
 attack=0.71 defense=0.31
 fall league = OPL Third Division U12, Spr OPL
 alt names used:
 HSC 01B
 HSC Milan

Venues played:
 Capital Cup BU11-12 Select
 Beaverton Cup BU12 Silver Blue
 Mt Hood Challenge BU12 Bronze
 Summer Slam Silver U12
 OPL Third Division U12
 Hillsboro Invitational BU12
 Spr OPL Mt. Baldy Division U12



HSC Milan B01
 Dots are actual minus expected GF (blue circles) and GA (red triangles).
 Blue line is smoothed change in attack strength. Red is smoothed change in defense strength.



	date	home		away		venue	pred.home	pred.away
26925	2014-04-27	HSC Milan B01	4	THUSC Uranium B01	0	Spr OPL Mt. Baldy Division U12	3.25	1.54
26324	2014-04-13	HSC Milan B01	7	NEU Lazio Silver B01	1	Spr OPL Mt. Baldy Division U12	4.67	0.83
26044	2014-04-12	HSC Milan B01	4	TFA Barcelona OR B02	1	Spr OPL Mt. Baldy Division U12	5.51	1.68
25858	2014-04-06	Lake Oswego SC Comets B01	0	HSC Milan B01	8	Spr OPL Mt. Baldy Division U12	2.55	4.07
25659	2014-04-05	HSC Milan B01	9	Gorge FC B01	0	Spr OPL Mt. Baldy Division U12	5.04	2.72
24929	2014-03-16	Thelo Cosmos B01	0	HSC Milan B01	1	Spr OPL Mt. Baldy Division U12	2.85	1.95
24601	2014-03-15	HSC United B01	3	HSC Milan B01	3	Spr OPL Mt. Baldy Division U12	3.20	1.95
24249	2014-03-09	FC West Warriors B01	2	HSC Milan B01	3	Spr OPL Mt. Baldy Division U12	2.29	2.69
18023	2013-11-10	HSC Milan B01	3	UUSC Fusion B01	1	Hillsboro Invitational BU12	2.91	2.29
18025	2013-11-10	BSC Portland Gold B01	0	HSC Milan B01	5	Hillsboro Invitational BU12	1.75	4.10
17655	2013-11-09	HSC Milan B01	2	PCU Black B01	1	Hillsboro Invitational BU12	3.78	1.44
17657	2013-11-09	UUSC Fusion B01	4	HSC Milan B01	3	Hillsboro Invitational BU12	2.29	2.91
16207	2013-10-27	HSC Milan B01	2	Lake Oswego SC Comets B01	3	OPL Third Division U12	4.07	2.55
15815	2013-10-26	Hillside SC Thunderbolts B01	2	HSC Milan B01	1	OPL Third Division U12	3.58	2.72
15290	2013-10-20	HSC Milan B01	2	HSC United B01	3	OPL Third Division U12	1.95	3.20
14899	2013-10-19	HSC Milan B01	6	ETFC Valencia Red -was White B01	0	OPL Third Division U12	6.33	0.69
13845	2013-10-12	FC West Warriors B01	2	HSC Milan B01	3	OPL Third Division U12	2.29	2.69
13277	2013-10-06	HSC Milan B01	4	PCU Black B01	0	OPL Third Division U12	3.78	1.44
11874	2013-09-28	HSC Milan B01	5	NEU Lazio Silver B01	1	OPL Third Division U12	4.67	0.83
11379	2013-09-22	HSC Milan B01	4	Foothills SC Falcons Green B01	0	OPL Third Division U12	5.70	0.56
10922	2013-09-21	WUSC Arsenal Navy B01	4	HSC Milan B01	0	OPL Third Division U12	3.17	1.85
10407	2013-09-15	Westside Timbers Mundial B01	0	HSC Milan B01	6	OPL Third Division U12	0.72	6.35
9954	2013-09-14	ETFC Valencia Red -was White B01	0	HSC Milan B01	5	OPL Third Division U12	0.69	6.33
9455	2013-09-08	Canby United SC Summit B01	0	HSC Milan B01	3	OPL Third Division U12	0.78	4.08
8365	2013-08-25	HSC Milan B01	0	Washington Timbers Crimson B01	1	Summer Slam Silver U12	3.54	1.64
7428	2013-08-18	HSC Milan B01	5	Lake Oswego SC Comets B01	2	Mt Hood Challenge BU12 Bronze	4.07	2.55
7035	2013-08-17	BSC Portland Gold B01	1	HSC Milan B01	5	Mt Hood Challenge BU12 Bronze	1.75	4.10
7058	2013-08-17	HSC Milan B01	6	Pacific FC Rapids B01	4	Mt Hood Challenge BU12 Bronze	2.81	2.29

	date	home		away		venue	pred.home	pred.away
6793	2013-08-16	HSC Milan B01	7	FC Salmon Creek Avalanche B01	0	Mt Hood Challenge BU12 Bronze	6.91	0.17
4166	2013-07-21	HSC Milan B01	6	Westside Timbers Mundial B01	2	Beaverton Cup BU12 Silver Blue	6.35	0.72
3687	2013-07-20	RVSC Timbers B01	7	HSC Milan B01	2	Beaverton Cup BU12 Silver Blue	3.74	2.43
3416	2013-07-19	Washington Timbers Burgundy B01	7	HSC Milan B01	0	Beaverton Cup BU12 Silver Blue	3.59	1.24
2425	2013-06-30	WUSC Manchester United White B02	2	HSC Milan B01	6	Capital Cup BU11-12 Select	1.21	4.57
2238	2013-06-29	HSC Milan B01	3	Capital FC Timbers Black -was Red B02	4	Capital Cup BU11-12 Select	3.15	2.28
2243	2013-06-29	Bend FC Timbers Red B02	7	HSC Milan B01	1	Capital Cup BU11-12 Select	2.02	2.93
2112	2013-06-28	HSC Milan B01	3	Albany FC Heat B01	7	Capital Cup BU11-12 Select	1.51	4.12